



What's New in FabTrol Pro Version 3.3

Advanced Bill of Material

- Import an advanced bill of material (ABM).
- Nest ABM against on-hand and purchasable material.
- Purchase material for a job with ABM traceability.

Document Retrieval

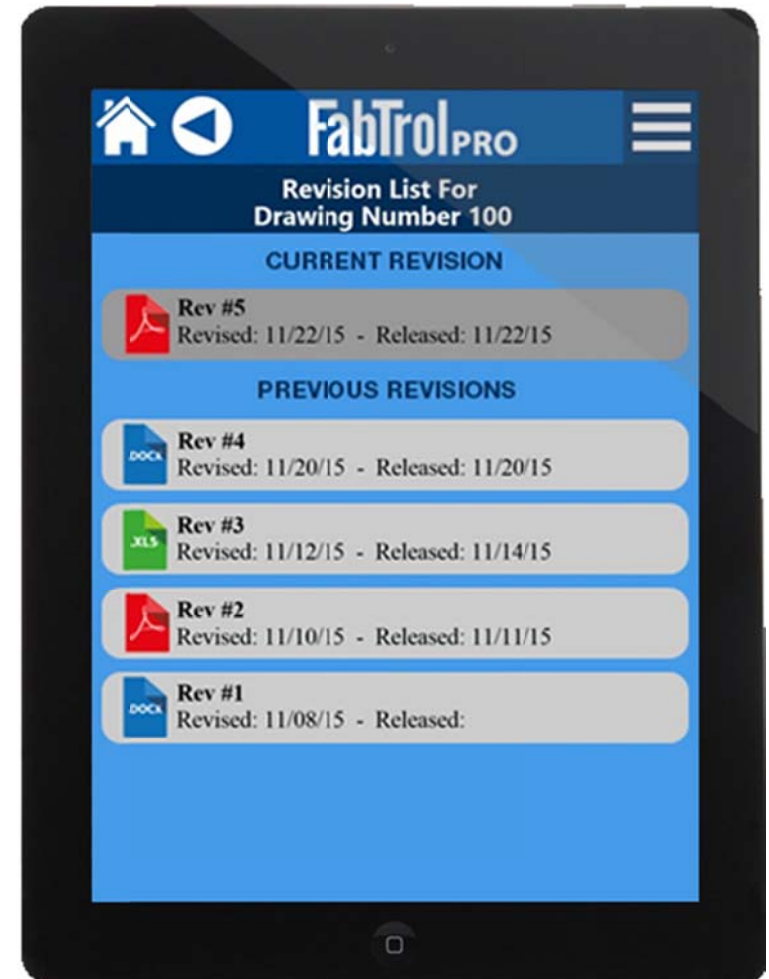
- Retrieve documents from any tablet (iPad, Android, Windows).
 - Show revision history
 - Any drawing type (contract, part, assembly)
 - Any file type you can view on your tablet (JPG, PDF, TIF, DWG, DXF)
 - Drawings are automatically organized for retrieval during import which eliminates the need to manage files in folders on a network

API (ADC, Barcoding)

- Support for part tracking.
- Update bar cut status and part status automatically from CNC machines.
- Integrate with many third-party machine and barcode integration partners.

CNC Management

- Send fabrication solution file to CNC machines.
 - Nested solution
 - Production plan and routing information
 - CNC data with accurate quantities for the bar and batch





Materials

- Edit material on an issued purchase order with automatic updates to stock.
- Record invoice information for received materials in purchasing.
- Track invoice details by PO line against PO total and invoice total.
- Copy billing codes from project to project (unit pricing).
- New reports: Part Material Status, Part Production Status and stock usage reports.

Production, Batching

- Review task status of assemblies summarized by batch, sequence or lot.
- View and manage shipping and production by batch.
- Create nests, of any material type, to match production batches.
- Review Production Log by batch.
- Filter by batch in BOM, production and shipping to support managing materials and production processes by batch.
- View and edit batch schedules in a Gantt chart.

Production

- Log the shipping status of assemblies in the Production Log.
- Track parts individually or by batch and work area.

Reports

- Many new reports.
- New CSV and text export variants of all reports including custom reports designed by the user to produce flattened data for import into accounting software and other software.
- Editable KISS Version 1.1 export.

Project	Qty	Seq/Lot	Batch	Issued	Loaded	Shipped	Load	Fit	Weld	Inspect	Blast	Paint	Galv	Ship
J-Nashville	124	1/0	12	18/Mar/15	124	124	S0005			124/124			124/124	124/124
J-Nashville	14	1/3, 2/3, 3/...	18	18/Mar/15				0/123	0/133	0/141	0/144	0/1		2/14
J-Nashville	161	10/0, 13/0,...						0/148	0/149	0/145	0/145			0/145
J-Nashville	145	5/0, 6/0, 6/...	17	18/Mar/15				53/160	0/160	0/160	0/160			0/160
J-Nashville	160	2/0, 3/0, 4/0	16	18/Mar/15				42/42	31/42	0/42	0/38			0/42
J-Nashville	42	6/0, 8/0	14	18/Mar/15				37/37	37/37	38/38	38/38	1/1		38/38
J-Nashville	38	1/0, 1/1, 1/...	13	18/Mar/15	38	38	S0001, S00...							
J-Nashville	54	1/1, 1/2, 1/...	15	18/Mar/15				54/54	54/54	54/54	54/54			54/54